

# Class 150 Bronze Y-Pattern Strainer

Y-Pattern body, Screwed cap, 304 stainless steel screen,  
Threaded ends or BS21 or NPT, or solder joint ends.\*

2.07 MPa (300 psi) W.O.G. non-shock  
1.03 MPa (150 psi) S.P. saturated

Fig. Y  
Fig. AKY



Fig. CY\*

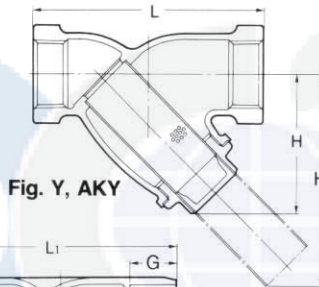


Fig. Y, AKY

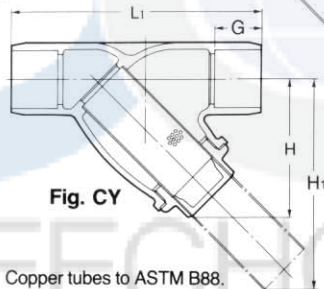


Fig. CY

## Materials

| Parts    | Material                 |
|----------|--------------------------|
| Body     | Bronze                   |
| Body cap | Brass                    |
| Gasket   | Non asbestos             |
| Screen*  | Type 304 stainless steel |

\* Screen is made of stainless steel plate which has 1.4ø (2" & smaller) or 1.5ø (2½" & 3") diameter × 2.4 (2" & smaller) or 2.5 (2½" & 3") pitches punched holes.

Test pressure: Shell 3.10 MPa (450 psi) (Hydrostatic)

Y... Threaded ends to BS21  
AKY... Threaded ends to ASME B1.20.1  
CY... Solder joint ends to JIS B2011 / ASME B16.18 (2½" & 3")

Copper tubes to ASTM B88.

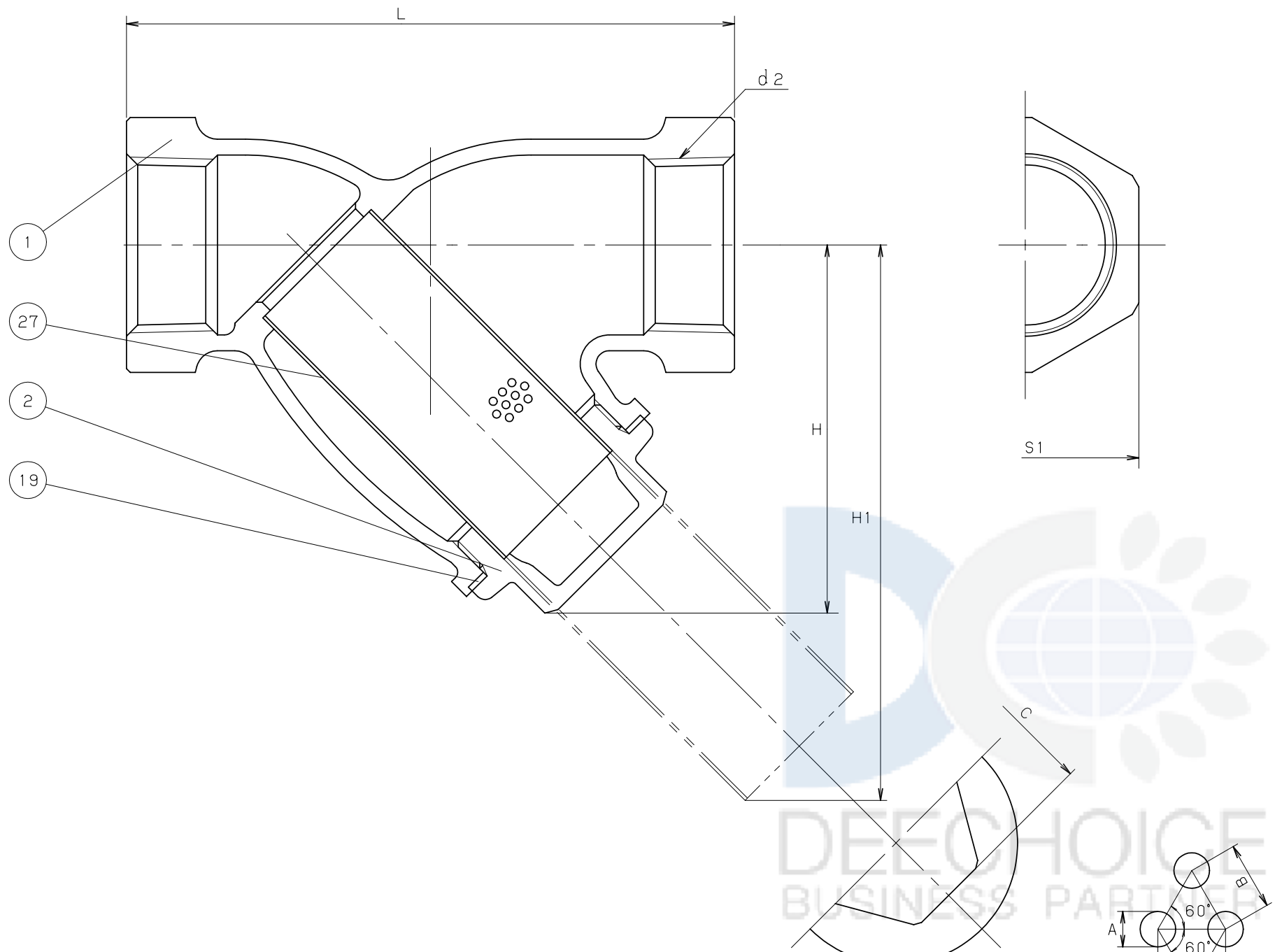
### ★ Caution

Solder joint end valves should not be used in service where the temperature of the line fluid is higher than the softening point of solder.

## Dimensions

| Valve size     | inch                | mm | 3/8 | 1/2  | 3/4  | 1    | 1¼   | 1½   | 2    | 2½   | 3    |
|----------------|---------------------|----|-----|------|------|------|------|------|------|------|------|
|                |                     |    | 10  | 15   | 20   | 25   | 32   | 40   | 50   | 65   | 80   |
| L              | Threaded end to end |    | 70  | 80   | 100  | 115  | 135  | 160  | 195  | 230  | 240  |
| L <sub>1</sub> | Solder end to end   |    | —   | 80   | 105  | 125  | 145  | 170  | 210  | 250  | 280  |
| H              | Height              |    | 44  | 49   | 57   | 70   | 82   | 98   | 121  | 148  | 180  |
| H <sub>1</sub> |                     |    | 61  | 68   | 84   | 106  | 125  | 150  | 189  | 217  | 268  |
| G              |                     |    | —   | 12.7 | 19.1 | 23.1 | 24.6 | 27.7 | 34.0 | 37.4 | 42.2 |

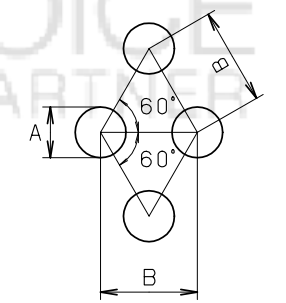
mm



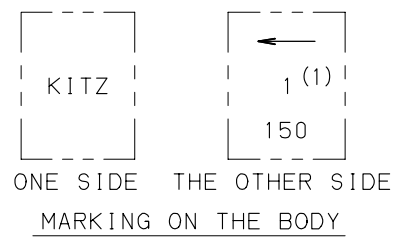
DIMENSIONS

UNIT:mm

| NOMINAL SIZE | d2       | H   | H1  | L   | S1  | A   | B   | C  |
|--------------|----------|-----|-----|-----|-----|-----|-----|----|
| 3/8          | Rc 3/8   | 44  | 61  | 70  | 23  | 1.4 | 2.4 | 17 |
| 1/2          | Rc 1/2   | 49  | 68  | 80  | 28  | 1.4 | 2.4 | 21 |
| 3/4          | Rc 3/4   | 57  | 83  | 100 | 35  | 1.4 | 2.4 | 24 |
| 1            | Rc 1     | 70  | 105 | 115 | 43  | 1.4 | 2.4 | 29 |
| 1.1/4        | Rc 1.1/4 | 82  | 124 | 135 | 52  | 1.4 | 2.4 | 35 |
| 1.1/2        | Rc 1.1/2 | 98  | 149 | 160 | 59  | 1.4 | 2.4 | 45 |
| 2            | Rc 2     | 121 | 188 | 195 | 72  | 1.4 | 2.4 | 54 |
| 2.1/2        | Rc 2.1/2 | 148 | 216 | 230 | 88  | 1.5 | 2.5 | 70 |
| 3            | Rc 3     | 180 | 267 | 240 | 105 | 1.5 | 2.5 | 85 |



HOLE SIZE OF SCREEN



NOTE (1) VALVE SIZE IDENTIFICATION.  
 (2) DON'T USE FOR FLAMMABLE GAS OR TOXIC GAS.

| NO | NAME OF PARTS | QTY | MATERIALS          | SPECIFICATIONS |
|----|---------------|-----|--------------------|----------------|
|    |               |     |                    | JIS SPEC.      |
| 1  | BODY          | 1   | CAST BRONZE        | CAC            |
| 2  | CAP           | 1   | FORGED BRASS       | C3771BE        |
| 19 | GASKET        | 1   | NON-ASBESTOS SHEET |                |
| 27 | SCREEN        | 1   | STAINLESS STEEL    | SUS304         |

| STANDARD | FACE TO FACE OR END TO END | KITZ STANDARD |
|----------|----------------------------|---------------|
|          | END CONNECTION             | JIS B0203     |
|          | WALL THICKNESS             | KITZ STANDARD |
|          | PRESSURE TEST              | KITZ STANDARD |
|          | FIGURE                     | Y             |

CLASS 150 (10K) CAST BRONZE  
 Y TYPE STRAINER  
 SCREWED CAP, SCREWED ENDS.

|           |               |            |      |      |    |
|-----------|---------------|------------|------|------|----|
| DATE APPD | JAN.05.'09    | DRAWING NO | △    |      |    |
| APPD BY   | M. TAKUSAGAWA | 916-C20008 | △    |      |    |
| CHKD BY   | I. TAKANO     |            | △    |      |    |
| DSGND BY  | T. AIKAWA     | REV-05     | △    |      |    |
| DRAWD BY  | Y. NAKAYAMA   |            | MARK | DATE | BY |

**KITZ CORPORATION**

