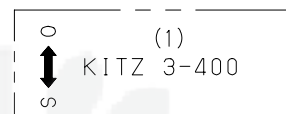


SIZE 2.1/2 & OVER

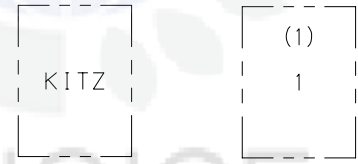


UP TO SIZE 2

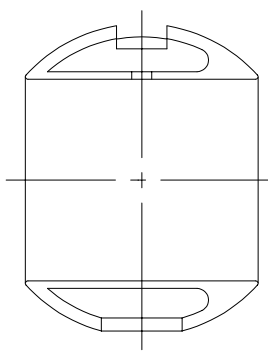


SIZE 2.1/2 & OVER

HANDLE MARKING



ONE SIDE THE OTHER SIDE
MARKING ON THE BODY



SIZE 1.1/2 & OVER

BALL SHAPE

DIMENSIONS

UNIT: mm

NOMINAL SIZE	d	d2	H	D1	L	S1
1/4	10	Rc 1/4	45	60	50	20
3/8	10	Rc 3/8	45	60	50	23
1/2	10	Rc 1/2	45	80	65	28
3/4	15	Rc 3/4	50	80	68	34
1	20	Rc 1	55	110	79	41
1.1/4	25	Rc 1.1/4	60	110	86	50
1.1/2	32	Rc 1.1/2	65	110	96	56
2	40	Rc 2	75	140	109	68
2.1/2	50	Rc 2.1/2	91	200	127	86
3	65	Rc 3	105	300	153	100
4	80	Rc 4	124	400	179	127

- NOTE (1) VALVE SIZE IDENTIFICATION.
 (2) SPECIAL BRASS, KITZ "K-METAL" IS DEVELOPED FOR ANTI-DEZINCIFICATION BY KITZ CORP.
 (3) Ni-Cr PLATING.
 (4) PLASTIC COVERING.
 (5) HANDLE SIZE IDENTIFICATION.
 (6) DON'T USE FOR FLAMMABLE GAS OR TOXIC GAS.

NO	NAME OF PARTS	QTY	MATERIALS	SPECIFICATIONS
				JIS SPEC.
1	BODY	1	FORGED BRASS	C3771BE
		1	CAST BRONZE	CAC
				(SIZE 4 ONLY)
2	BODY CAP	1	FORGED BRASS	C3771BE
		1	CAST BRONZE	CAC
				(SIZE 4 ONLY)
3	STEM	1	SPECIAL BRASS (2)	KITZ "K-METAL"
4	BALL	1	FORGED BRASS	C3771BE (3)
9	HANDLE	1	STAINLESS STEEL	SUS430 (4)
		1	DUCTILE IRON	FCD400
				(SIZE 2.1/2-4)
10	HANDLE NUT	1	CARBON STEEL	SS400
16	WASHER	1	CARBON STEEL	SWRH62
				(UP TO SIZE 2)
30	BALL SEAT	2	PTFE	
45	O RING	2	FKM	
47	THRUST WASHER	1	POM	

STANDARD	FACE TO FACE OR END TO END	KITZ STANDARD
	END CONNECTION	JIS B0203
	WALL THICKNESS	KITZ STANDARD
	PRESSURE TEST	KITZ STANDARD
FIGURE		T

TYPE 400 FORGED BRASS
 BALL VALVES
 STANDARD BORE, SCREWED ENDS.

DATE APPD	OCT.27. '08	DRAWING NO			
APPD BY	M. TAKUSAGAWA	925-C50013			
CHKD BY	I. TAKANO				
DSGND BY	T. AIKAWA				
DRAWD BY	Y. NAKAYAMA		REV-13	MARK	DATE

KITZ CORPORATION

